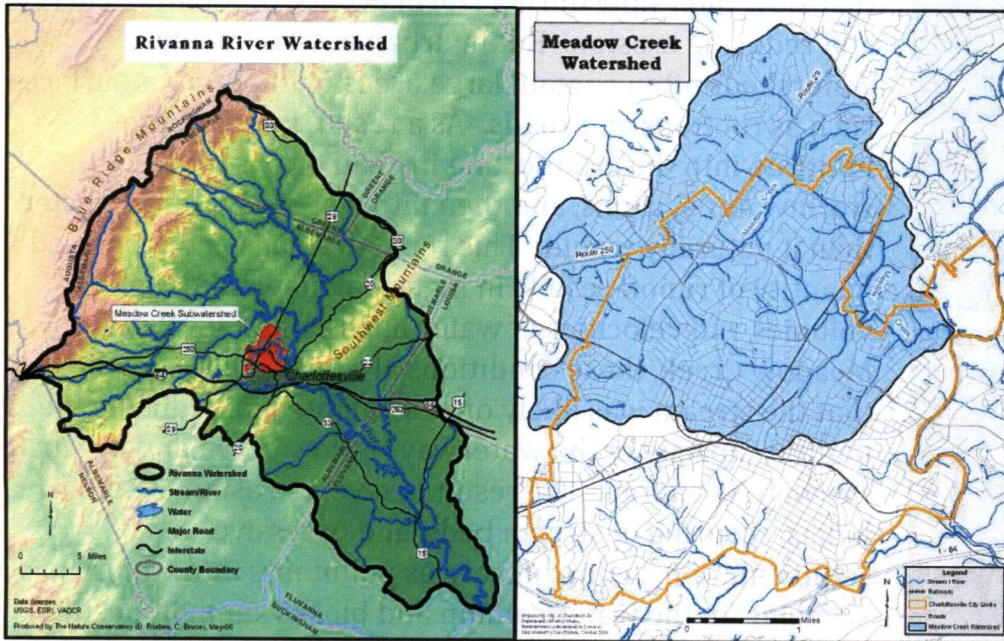


Meadow Creek Stream Restoration Project

Charlottesville, Virginia



Meadow Creek is one of Charlottesville's major waterways

Meadow Creek Facts:

Meadow Creek lies within the Rivanna River watershed, which is part of the larger Chesapeake Bay watershed. The drainage area for Meadow Creek is about 5,800 acres in size. Meadow Creek originates at Observatory Hill on the grounds of the University of Virginia and flows east through the northern part of Charlottesville until it joins the Rivanna River at Charlottesville's Pen Park.

Restoration Goals:

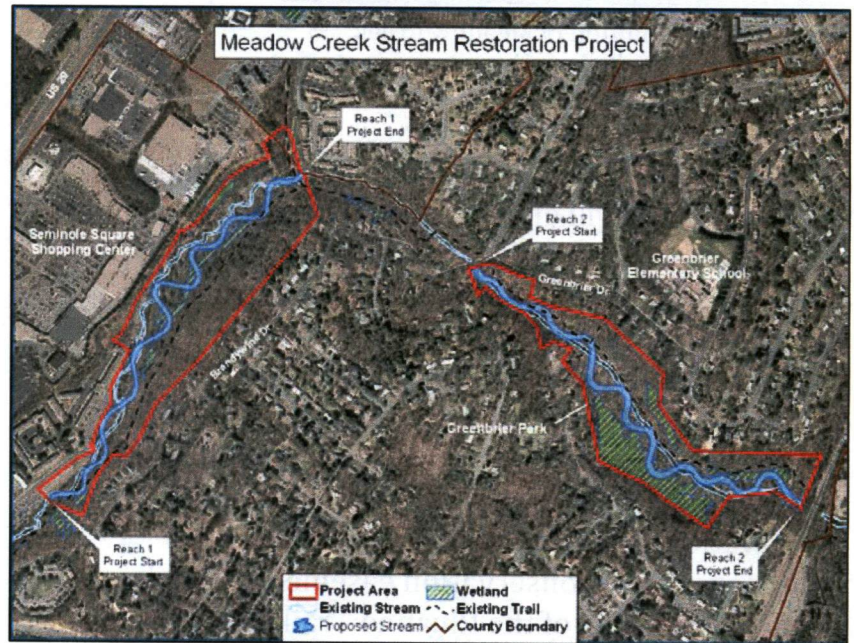
To reduce streambank erosion and sedimentation, enhance and establish forested riparian buffers, improve water quality and stream stability, and protect and enhance wildlife habitat.

Project Facts:

- Restoration of >7,000 feet of Meadow Creek
- Protection of 62 acres of forest and wetlands
- \$3.2 million project, funded by the Virginia Aquatic Resources Trust Fund

Project Summary

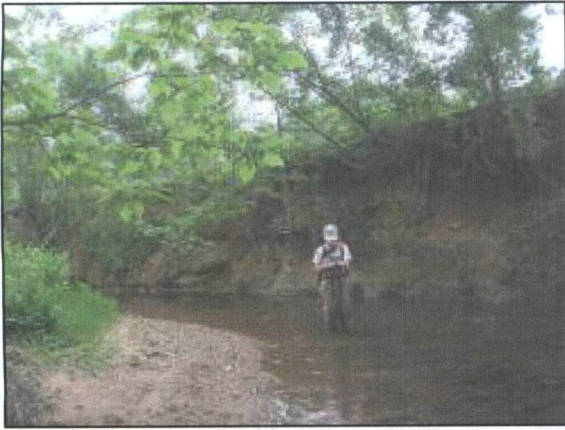
Increased sedimentation, due in part to uncontrolled stormwater runoff, stream bank erosion, and the lack of forested buffers in riparian areas, poses a serious threat to the health of Meadow Creek and the Rivanna River. Meadow Creek has been selected to undergo a major restoration to address this threat. Two reaches of the creek will be restored – one within Greenbrier Park, and the other behind Seminole Square Shopping Center. The restoration will result in a stabilized stream and improved water quality, as well as enhanced aquatic and forest habitats and aesthetic values.



The project includes over 7,000 feet of stream and 62 acres of land

Why Meadow Creek?

Numerous local assessments have documented the deteriorated state of Meadow Creek and identified the need for its restoration. In addition, the Virginia Department of Environmental Quality has listed Meadow Creek and a segment of the Rivanna River downstream as "impaired waterways." Impairment in these waters is believed to be due in part to excessive sedimentation from streambank erosion. Restoring Meadow Creek and preserving the forested buffer and wetlands along the creek will aid in reducing sedimentation and filtering runoff entering Meadow Creek and the Rivanna River. This project also builds on investments that the University of Virginia has made to improve the headwaters and upper reaches of Meadow Creek, including the daylighting project completed at the Dell and restoration work at the John Paul Jones Arena.



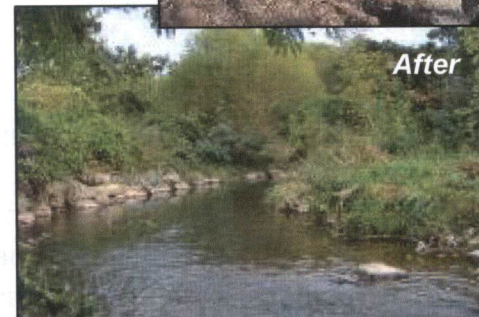
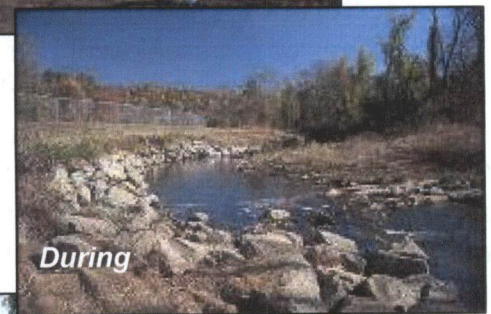
Existing condition of Meadow Creek

Existing Conditions

In a natural setting, rivers create meanders and floodplains that slow their flow during storm events, dissipating energy and reducing erosion. But in urban environments, watersheds often contain large areas of impervious surfaces such as rooftops and roads. As a result, water cannot infiltrate into the ground, and instead drains into stormwater systems, and then into waterways, much faster than it naturally would. This rapid drainage and increased quantity of runoff results in high peak flows and high volumes and velocities of water in streams and rivers. In Meadow Creek, these conditions are made worse by the fact that the stream was likely once straightened, reducing the natural capacity of the waterway to slow down and dissipate the water's energy. The result is severe erosion of stream banks, scouring of stream beds, and excessive sedimentation. Sediment carries pollutants into waterways, suspends in the water column and blocks sunlight needed for the growth of aquatic vegetation, clogs the gills of fish (sometimes suffocating them) and eventually destroys aquatic habitat in streambeds when it settles.

Restoration Activities

Restoration work will likely begin in the summer or fall of 2009 and will entail reducing the steep height of the stream banks, realigning the stream channel, adding meanders and in-stream habitat structures, and planting trees to enhance the buffer along the stream. A similar stream restoration project was completed by the City of Charlottesville in 2000 on Moores Creek in Azalea Park. To permanently protect Meadow Creek and its riparian wetlands and buffer, conservation easements will be placed over the project area. The conservation easements will also protect over a mile of the Rivanna Trail located along Meadow Creek. A trails plan is being developed that will work in concert with the new easements and stream alignment. The restoration project will also be coordinated with the Rivanna Water and Sewer Authority, which is undertaking a sanitary sewer interceptor upgrade at the same location, to ensure protection for both the stream and the interceptor.



Restoration of Moores Creek in Azalea Park

**For more information and project updates visit:
www.charlottesville.org/meadowcreek**

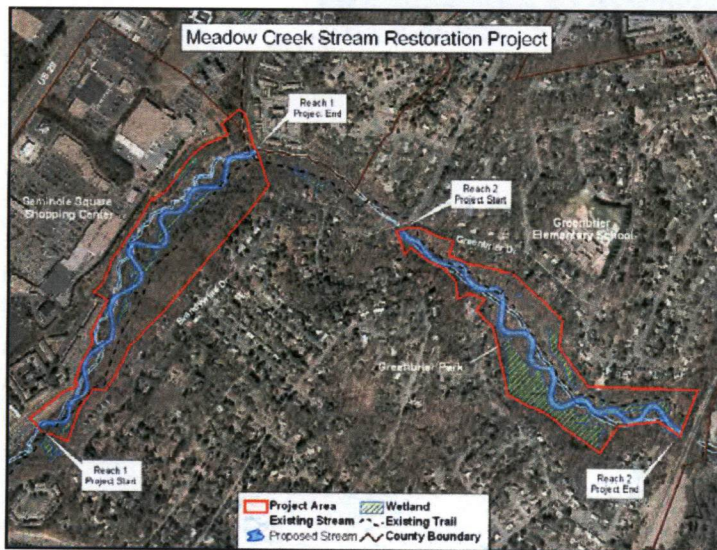
PROJECTS UPDATE

JUNE 2009

MEADOWCREEK STREAM RESTORATION AND SEWER REPLACEMENT COMMITTEE

MEADOW CREEK STREAM RESTORATION PROJECT .

- RFP FOR FINAL STREAM DESIGN AND PLANTING PLAN, COORDINATION OF PERMITTING, AND IMPLEMENTATION OF STREAM DESIGN WAS RELEASED BY TNC ON FRIDAY, JUNE 12
- A SITE SHOWING / PRE-PROPOSAL MEETING FOR CONTRACTORS WILL BE HELD ON WEDNESDAY, JUNE 24
- FINAL PROPOSALS ARE DUE TO TNC BY AUGUST 12, 2009
- A FIRM TO PERFORM THE WORK DESCRIBED IN THE RFP WILL BE SELECTED IN MID-SEPTEMBER
- STREAM RESTORATION AND ENHANCEMENT CONSTRUCTION SLATED FOR EARLY 2010
- CONSERVATION EASEMENTS UNDER REVIEW BY THE US ARMY CORPS OF ENGINEERS
- BIOLOGICAL MONITORING OF MEADOW CREEK IN THE PROJECT AREA IS ONGOING



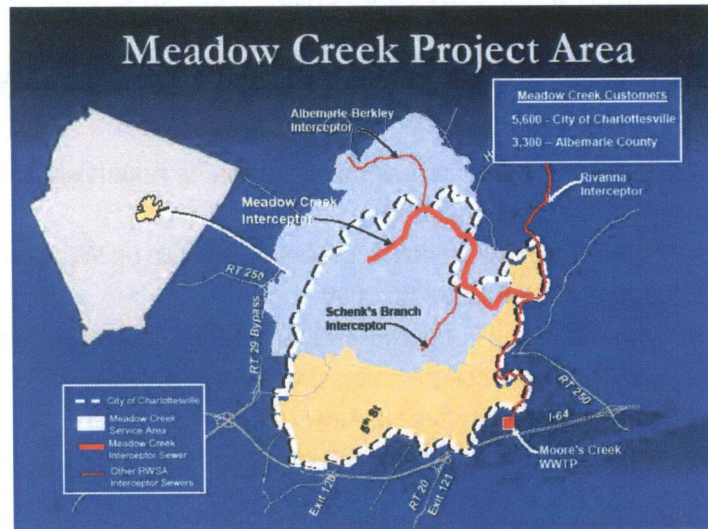
PROJECT PARTNERS, INCLUDING THE CITY, TNC, AND RWSA HAVE RECENTLY HELD IMPORTANT COORDINATION MEETINGS REGARDING THE TWO PROJECTS. ONE MEETING (JUNE 11) FOCUSED ON THE RWSA PROPOSED LANDSCAPING/REPLANTING PLAN IN THE INTERCEPTOR EASEMENT, AS WELL AS ISSUES SURROUNDING TRAILS IN THE PROJECT AREA. ANOTHER MEETING (JUNE 24) HOSTED PROSPECTIVE CONTRACTORS FOR THE STREAM RESTORATION PROJECT TO PROVIDE THEM WITH A PROJECT OVERVIEW, TOUR THE STREAM RESTORATION SITE, AND ANSWER QUESTIONS REGARDING THE RECENTLY RELEASED RFP AND THE PROJECTS IN GENERAL

PLEASE CHECK OUR WEBPAGE FOR UPDATES AS THIS PROJECT MOVES FORWARD:

WWW.CHARLOTTESVILLE.ORG/MEADOWCREEK

Meadowcreek Sanitary Sewer Interceptor Upgrade

THE DESIGN OF THE REPLACEMENT OF THE MEADOW CREEK WASTEWATER INTERCEPTOR CONTINUES TO MOVE FORWARD. THE PRIMARY OBJECTIVE OF RWSA'S DESIGN CONSULTANT WITHIN THE PAST 60 DAYS HAS BEEN TO COMPLETE MODIFICATIONS TO THE PROJECT DESIGN TO REFLECT THE RECENT REQUESTS OF THE CITY OF CHARLOTTESVILLE (CITY) AND THE ALBEMARLE COUNTY SERVICE AUTHORITY (ACSA). A REVISED DESIGN IS EXPECTED IN EARLY JULY, AFTER WHICH FURTHER REVIEW TIME WILL BE PROVIDED FOR ANY FINAL COMMENTS BY THE CITY AND ACSA. A PERIOD BETWEEN EARLY JULY AND MID-AUGUST WILL ALSO BE FAVORABLE FOR REVIEW WITH INTERESTED CITIZENS. THE BIDDING OF THE PROJECT IS ANTICIPATED BY SEPTEMBER, AND THE AWARD OF A CONSTRUCTION CONTRACT IS CURRENTLY ANTICIPATED TO OCCUR BY OCTOBER.



EASEMENT NEGOTIATIONS ARE CONTINUING WITH SEVERAL PROPERTY OWNERS. RWSA ALSO PROPOSED A LANDSCAPING PLAN SEVERAL WEEKS AGO THAT WAS VERY FAVORABLY RECEIVED BY MULTIPLE HOMEOWNERS ASSOCIATIONS, AND RWSA IS PLANNING TO ISSUE A MAILING TO ALL ADJACENT PROPERTY OWNERS BY JUNE 26, 2009. THE MAILING WILL PROVIDE EACH PROPERTY OWNER A MAP OF THE OWNER'S SPECIFIC PROPERTY SHOWING THE PROPOSED LOCATIONS OF NEW TREES AND SHRUBBERY, WITH OPTIONS TO CHOOSE SPECIFIC SPECIES FROM A PALATE OF "SEWER SAFE" VEGETATION. RWSA WILL ALSO BE SCHEDULING MEETINGS WITH INDIVIDUAL HOMEOWNERS' ASSOCIATIONS IN JULY TO SOLICIT FEEDBACK AND ASSIST PROPERTY OWNERS WITH FLEXIBLE CHOICES EACH PROPERTY OWNER MAY MAKE. THE INTENT IS TO MAINTAIN VERY POSITIVE DISCUSSIONS AND TO KEEP THIS PLAN

FLEXIBLE, CONSISTENT WITH BUDGET OBJECTIVES AND THE NEED TO BE FAIR AND EQUITABLE TO ALL PROPERTY OWNERS.

RWSA HAS MENTIONED IN PREVIOUS PUBLIC MEETINGS THAT IT WOULD INVITE DISCUSSION AND COMMENTS FROM THE PUBLIC ON THE ISSUE OF ALLOWABLE WORK HOURS FOR THE CONSTRUCTION CONTRACTOR. THE CURRENT DRAFT SPECIFICATIONS WOULD ALLOW THE CONTRACTOR TO WORK BETWEEN 7:00 AM AND 7:00 PM MONDAY THROUGH FRIDAY. WHILE THERE ARE POTENTIAL TRADE-OFFS WITH RESPECT TO THIS ISSUE (A SHORTER WORK DAY CAN INCREASE THE NUMBER OF DAYS A CONTRACTOR IS WORKING WITHIN A GIVEN AREA), RWSA WANTS TO CONTINUE TO ADVISE THAT PUBLIC DISCUSSIONS OF THIS ISSUE REMAINS WELCOMED.

PROJECT CONTACT INFORMATION

STREAM RESTORATION:

Diane Frisbee
The Nature Conservancy Project Contact
951-0537
dfrisbee@tnc.org

Kristel Riddervold
City of Charlottesville Project Contact
970-3631
Riddervold@charlottesville.org

INTERCEPTOR UPGRADE:

RWSA
977-2970

Tom Frederick - Executive Director
tfrederick@rivanna.org

Michelle Simpson - Design
msimpson@rivanna.org

Tamara Ambler - Landscape
tambler@rivanna.org