



Chamber Promenade to the Murray - Van Yahres Grove

A Gift to the Community

Overall Goal: Working with the Charlottesville Regional Chamber of Commerce, the Murray and Van Yahres family will raise funds to create a place on the hill top in McIntire Park east which will:

- **Honor all Paul Goodloe McIntire Citizenship award winners, past and future.**
- **Preserve the historic Oaks.**
- **And create a stone terrace for people to enjoy under these trees.**

Process:

- Before designing this project, we obtained preliminary approval for our goals from the City Manager, the Parks and Recreation Director, the Parks Advisory Board and individual City Councilors.

- Working with our design committee composed of Warren Byrd, Sue Nelson, Chris Murray, Roxanne White and Mike and Peggy Van Yahres, we hired a local landscape architectural firm, Water Street Studio, to design the project.

- We also collaborated with the Parks Department throughout the design process.

- We have established a fund at the Charlottesville Area Community Foundation to accept donations for the project.

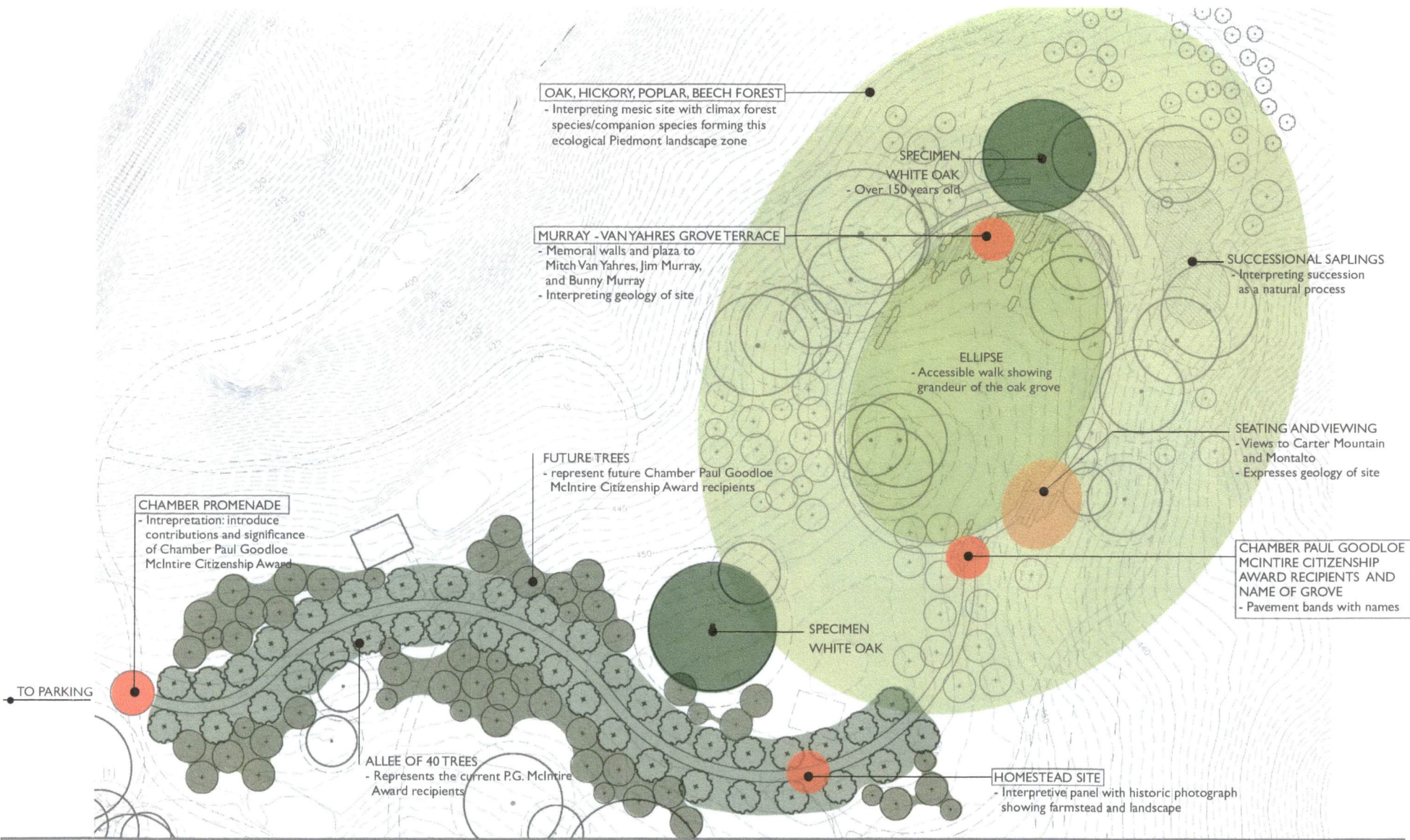
- Working with Waterstreet Studio, J. W. Townsend Landscapes projected a preliminary budget for the project of \$475,000.

Future Schedule:

- First, we want to obtain approval for the design from the Parks Advisory Board and then, City Council.

- With these approvals in hand, we will form a fund-raising committee to raise the necessary funds. The Chamber is also going to assist with fund-raising.

- We project that we will begin construction in the Spring of 2018 with a completion date of October 1, 2018.



OAK, HICKORY, POPLAR, BEECH FOREST

- Interpreting mesic site with climax forest species/companion species forming this ecological Piedmont landscape zone

SPECIMEN

WHITE OAK
- Over 150 years old

MURRAY - VAN YAHRES GROVE TERRACE

- Memorial walls and plaza to Mitch Van Yahres, Jim Murray, and Bunny Murray
- Interpreting geology of site

SUCCESSIONAL SAPLINGS

- Interpreting succession as a natural process

ELLIPSE

- Accessible walk showing grandeur of the oak grove

SEATING AND VIEWING

- Views to Carter Mountain and Montalto
- Expresses geology of site

FUTURE TREES

- represent future Chamber Paul Goodloe McIntire Citizenship Award recipients

CHAMBER PROMENADE

- Interpretation: introduce contributions and significance of Chamber Paul Goodloe McIntire Citizenship Award

CHAMBER PAUL GOODLOE MCINTIRE CITIZENSHIP AWARD RECIPIENTS AND NAME OF GROVE

- Pavement bands with names

SPECIMEN WHITE OAK

TO PARKING

ALLEE OF 40 TREES

- Represents the current P.G. McIntire Award recipients

HOMESTEAD SITE

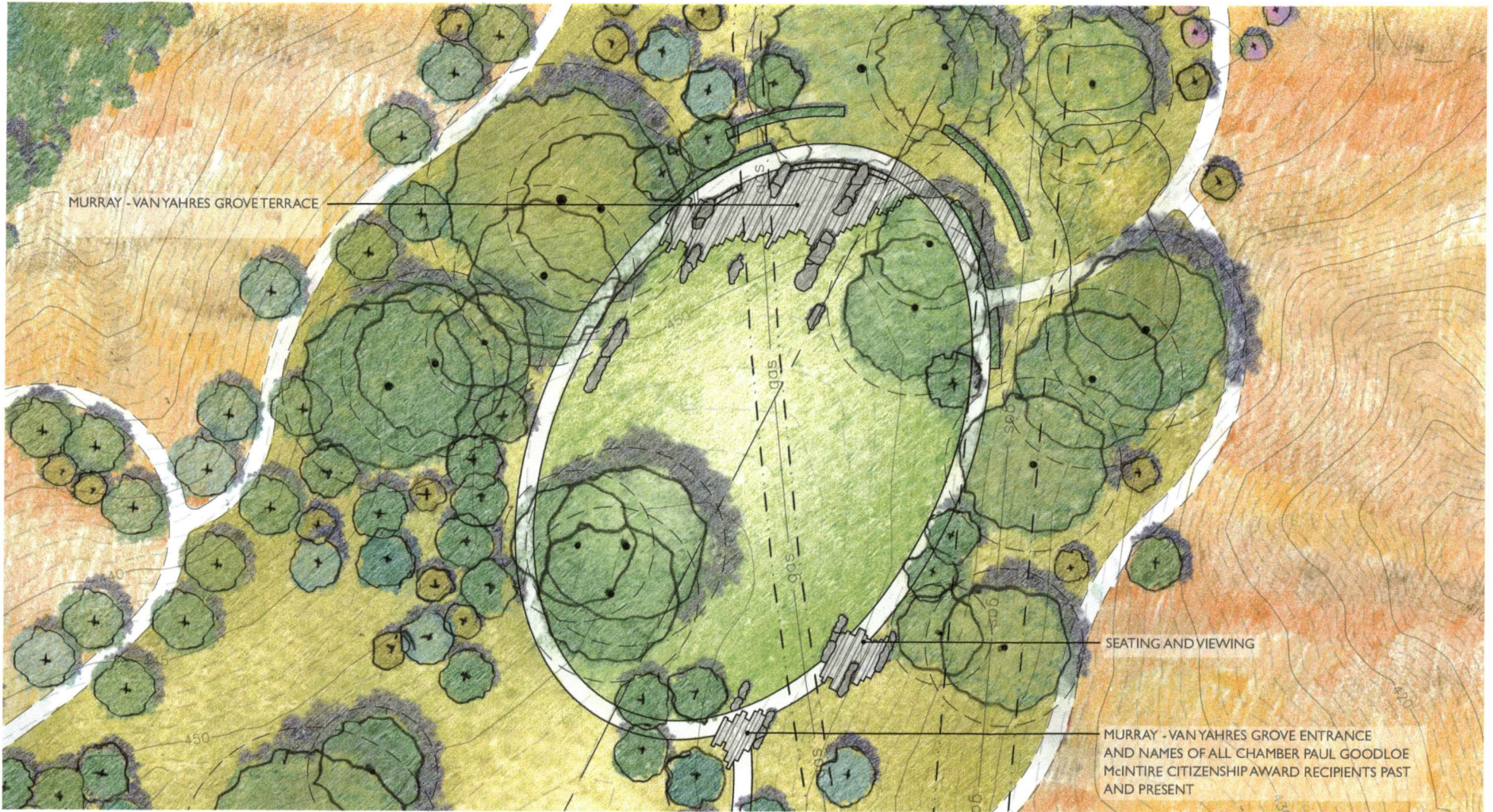
- Interpretive panel with historic photograph showing farmstead and landscape



OVERALL CONCEPT PLAN

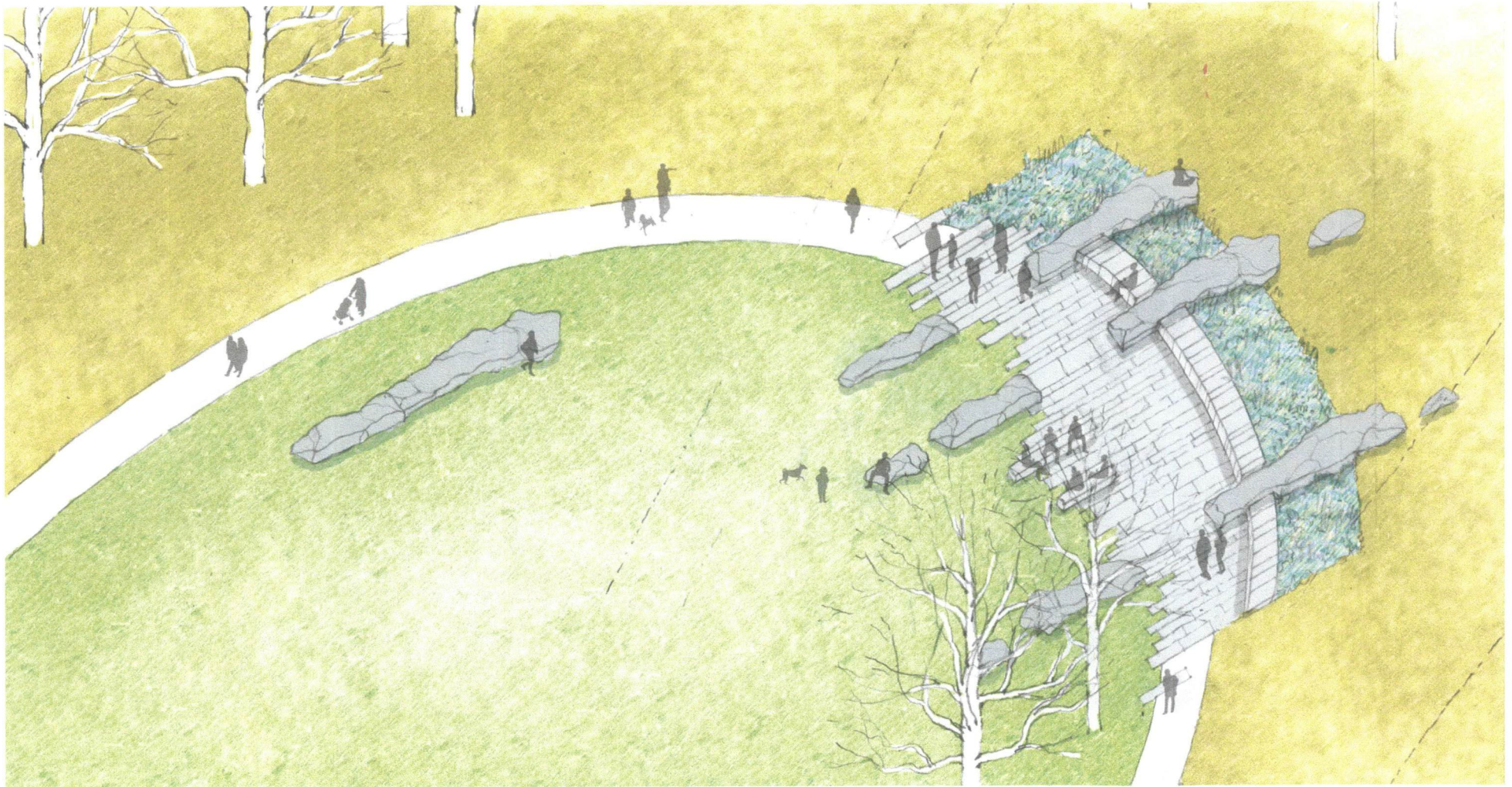


0 100 feet



CONCEPT PLAN





0 20 feet

ELLIPSE - DETAIL